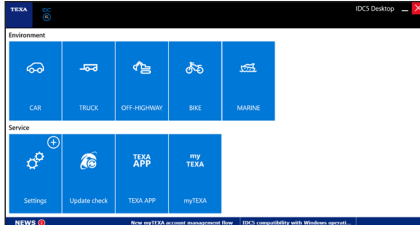


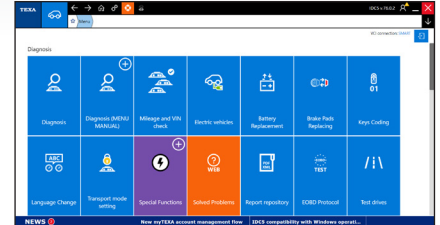
RCCS3 CONFIGURATION MINI PC / BT LASERS

IDC5 BLUETOOTH CONNECTION FOR FIRST TIME USE

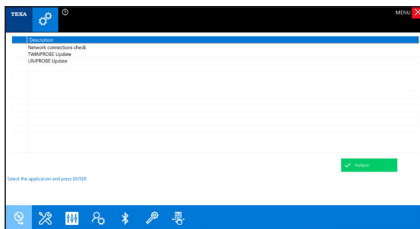
1 Log Into Your Registered IDC5 Account With Current Software Coverage



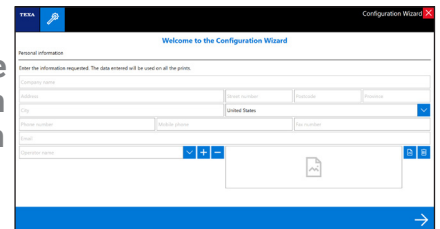
2 Select CAR Environment Diagnostics



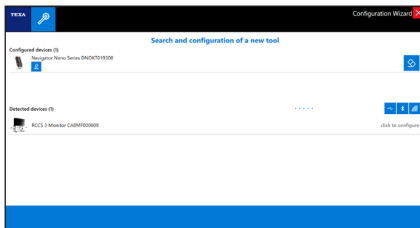
3 Select The Settings Icon At The Top Of The Menu Bar



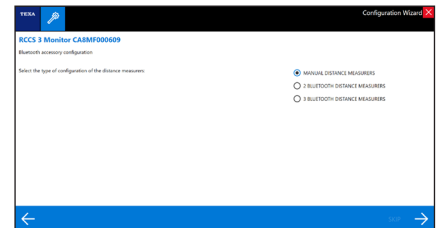
4 Select Wand Icon Navigate Configuration Wizard / Form Fill-In Shop Information



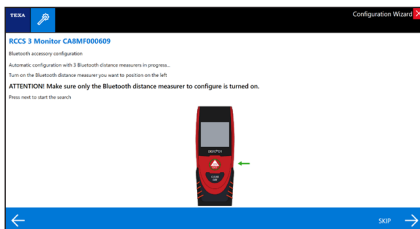
5 Select RCCS3 From Detected Devices List / MINI PC Is Now Bluetooth Configured



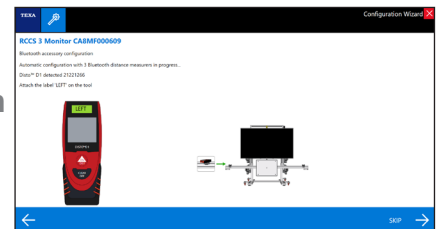
6 Select "3 Bluetooth Distance Measures" To Access All Devices



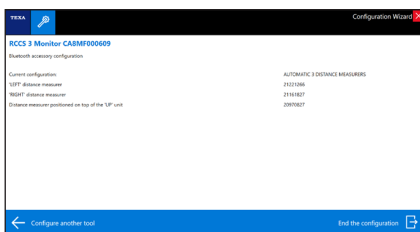
7 Turn On BT Measurement Devices In Consecutive Order As Described



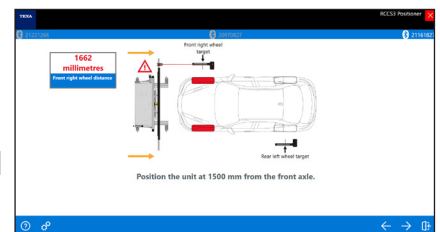
8 Bluetooth Accessory Configuration Confirmation Screen



9 Select End Configuration To Complete The Setup Process



Pre Calibration Setup
Confirmation The Bluetooth Measure Devices Connected



TECH TIP - Avoid Excessive BT Exposure From Other Hardware During Pairing Or Measurement